



Wildlife Management Activities Categories

Tim Milligan

Landowner Services

Plateau Land & Wildlife Management



- Private company, est. 1997
- Founders helped establish WMV law
- Central Texas Based
- Serving Texas Landowners
- Staff Wildlife Biologists
- Trained, dedicated field technicians
- Registered Property Tax Consultants

BRAUN & GRESHAM

ATTORNEYS AT LAW

Advocates for you and your land.

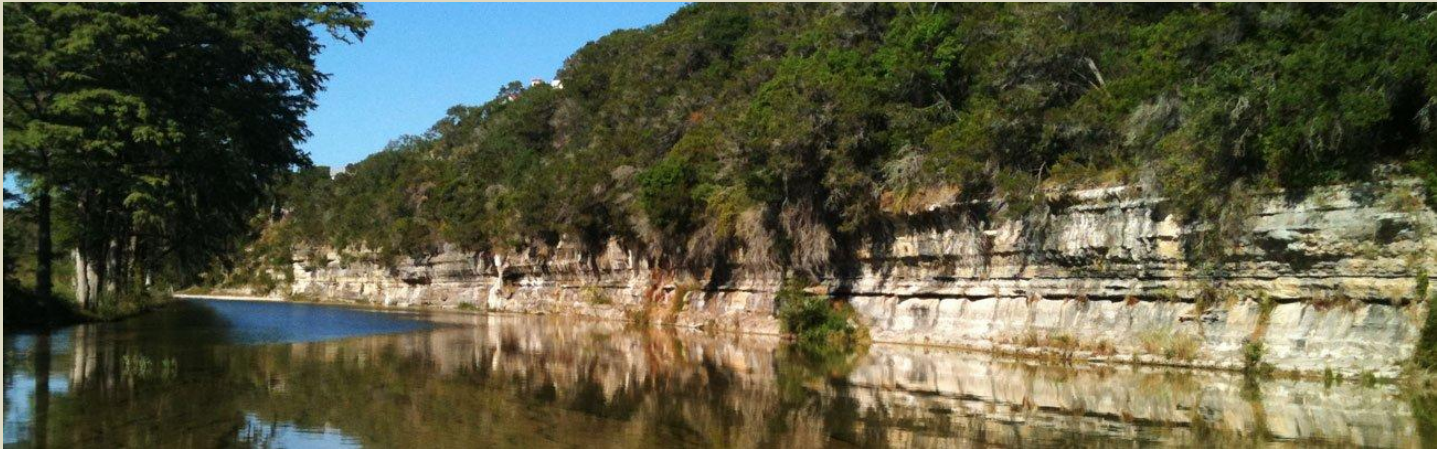


- Property Tax
- Powerline Routing
- Conservation Real Estate
- Risk Management
- Estate Planning
- Conservation Easement
- Water Rights
- Condemnation



*Rural Land.
Real Knowledge.
Real Value.*

- Rural Real Estate Specialists
- Knowledge of land, income and sales tax advantages
- Work with buyers and sellers



Wildlife Management

- Activity based
- Need to be able to show you have been active
- Not meant to be more difficult or costly than Ag.
- Appraisers job is a little more difficult - no animals to look at.
- You can make it easier by doing what's expected and keeping good records



General Requirements and Expectations

- 3 of 7 practices at the very minimum – more is always better
- Proof of meeting required intensity – acreage, number, frequency
- Activity was done in the year for which it is being requested – Annual Report
- Show that you have been active in your management – you or someone (Plateau, tenant, other)
- This proves that you deserve the 1-D-1 valuation – it is important

Why is it important to keep good records?

- Your property tax valuation can depend on it
- It can be hard to catch up, in both compliance and management goals – **my memory is not what it once was**
- Reassurance of knowing if you're on the right track
- It can be all the CAD ever sees – **Paint a picture**
- More and more CAD's are requesting Annual Reports of activities

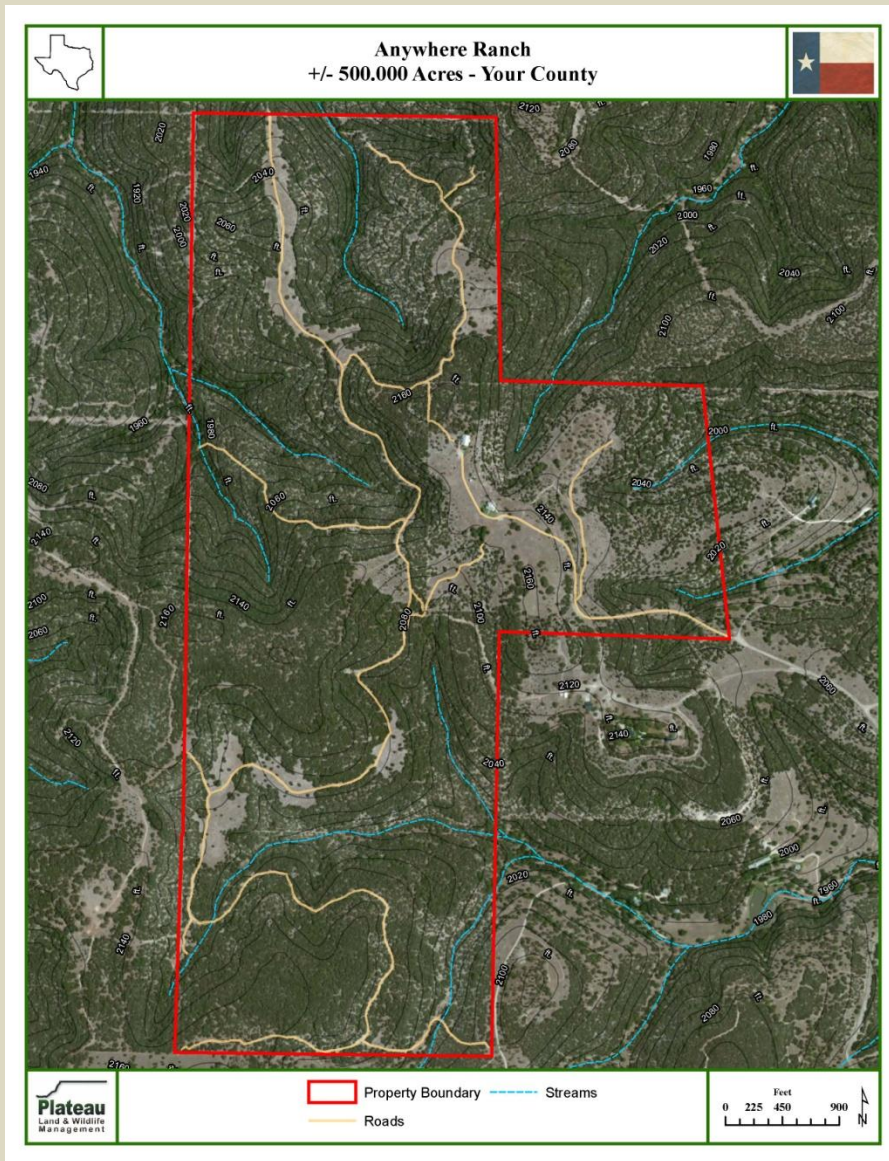
What the CAD expects and how they inspect

- Annual Reports
- Site Inspection
- Plan Updates



Tools of the Trade

- **Wildlife Management Plan** – Tells me how to do all this and lets the CAD know what I am doing.
- **GPS** – good, but not a must
- **Camera** – most important
- **Maps** – always helpful
- **Log book** – for notes
- **Calendar** – more notes
- **Folder** – receipts, reports, stuff

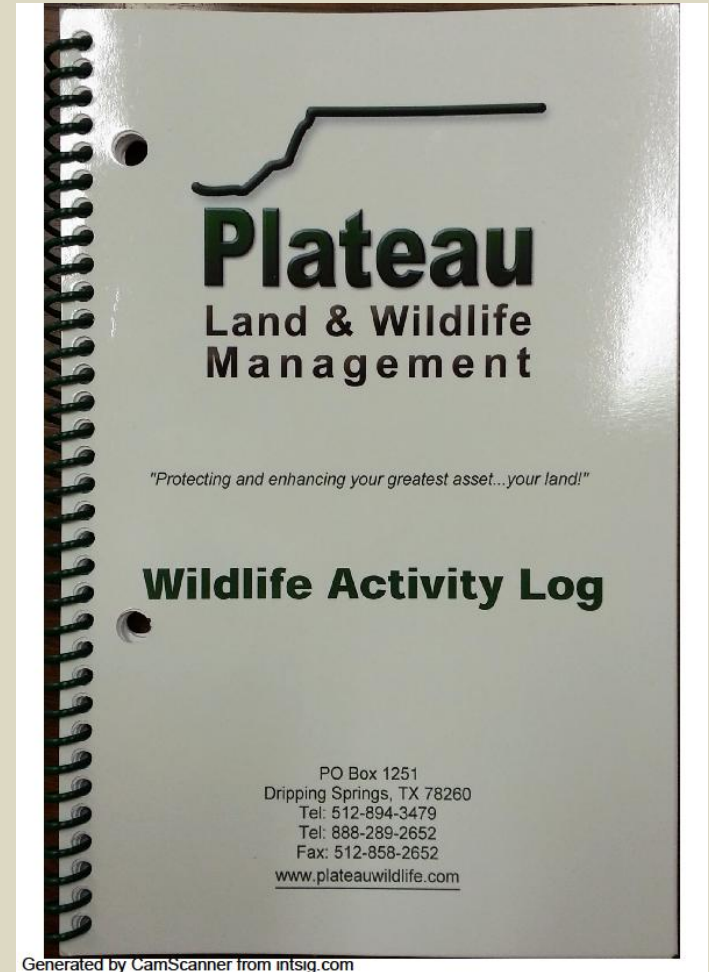


Maps are great tools to help identify what has been done and where.

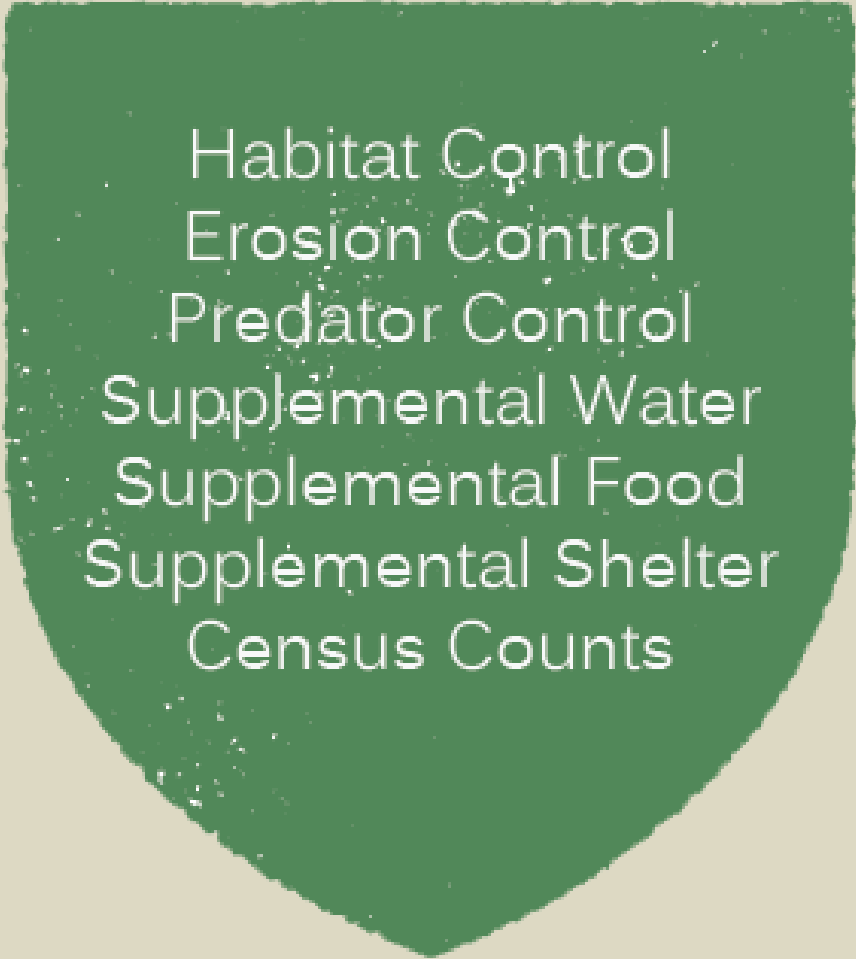
Create a new map at the end of each year when there have been changes or major project completed.

Record Keeping Materials: Checklist/Matrix/Log Book

Wildlife Management Planning Matrix				Property:					
PLATEAU (512) 894-3479				Date:		County(ies):			
Target species:				Acres:					
TREATMENTS	Cod e	Acres	Notes (Rate, Species, Timing, Intensity, etc)	2011	2012	2013	2014	2015	
1. Habitat Control:									
a. Grazing Management									
b. Prescribed Burning									
c. Range Enhancement (Re-seeding)									
d. Brush Management									
e. Riparian Management and Enhancement									
f. Wetland Enhancement									
g. Habitat Protection for Species of Concern									
h. Prescribed Control of Species									
i. Wildlife Restoration									
TREATMENTS	Cod e	Acres	Notes	2011	2012	2013	2014	2015	
2. Erosion Control:									
a. Pond Construction and Major Repair									
b. Gully Shaping									
c. Streamside, Pond and Wetland Revegetation									
d. Native Plant Establishment on Erodele Areas									
e. Dike / Levee Construction / Management									
f. Establish Water Diversion									
TREATMENTS	Cod e	Acres	Notes	2011	2012	2013	2014	2015	
3. Predator Control:									
a. Predator Management									
b. Imported Red Fire Ant Control									
c. Control of Cow birds									
d. Grackle / Starling / House Sparrow Control									
TREATMENTS	Cod e	Acres	Notes	2011	2012	2013	2014	2015	
4. Supplemental Water:									
a. Marsh / Wetland Restoration or Development									
b. Well/Troughs/Windmill Overflow /Other Wildlife Waterers									
c. Spring Development and / or Enhancement									
TREATMENTS	Cod e	Acres	Notes	2011	2012	2013	2014	2015	
5. Supplemental Food:									
a. Grazing Management									
b. Prescribed Burning									
c. Range Enhancement (Re-seeding)									
d. Food Plots									
e. Feeders and Mineral Supplementation									
f. Managing Tame Pasture, Old Fields, Croplands									
g. Transition Management of Tame Grass Monocultures									
TREATMENTS	Cod e	Acres	Notes	2011	2012	2013	2014	2015	
6. Providing Shelter:									
a. Nest Boxes, Bat Boxes									
b. Brush Piles and Slash Retention									
c. Fence Line Management									
d. Hay Meadow, Pasture and Cropland Mgmt. for Wildlife									
e. Half-Cutting Trees or Shrubs									
f. Woody Plant / Shrub Establishment									
g. Natural Cavity / Shag Development									
TREATMENTS	Cod e	Acres	Notes	2011	2012	2013	2014	2015	
7. Census:									
a. Spotlight Counts									
b. Aerial Counts									
c. Incidental Observations & Stands Counts									
d. Daylight Deer Herd, Wildlife Composition, Photo Stations									
e. Harvest Data Collection and Record Keeping									
f. Browse Utilization Surveys									
g. Endangered, Threatened or Protected Species									
h. Census and Monitoring of Game & Nongame Wildlife									



Wildlife Management Activity Categories



Habitat Control
Erosion Control
Predator Control
Supplemental Water
Supplemental Food
Supplemental Shelter
Census Counts

Habitat Control

Activities that contribute to habitat control or management include:

- grazing management
- prescribed burning
- range enhancement
- brush management
- forest management
- riparian management and improvement
- wetland improvements
- habitat protection for species of concern
- managing native, exotic and feral species - hunting
- wildlife restoration







[illegible]

Good Records

- Before and after photos
- Calendar record showing when the work was done
- Receipts if someone else did it
- Map showing acreage treated
- Description of what was done and how it benefitted your wildlife and fit your plan

Erosion Control

Some erosion control practices include:

- pond construction
- pond clean out and repair
- spillway repair
- gully shaping
- streamside, pond and wetland re-vegetation
- establishing native plants
- dike, levee construction or management
- water diversions
- low water crossings and culverts



Predator Control

Some types of predator management and/or control include:

- mammal predator control (trapping, hunting)
- fire ant control
- brown-headed cowbird control
- grackle or starling control

Imported Red Fire Ant Control



When I was a tech doing fire ant treatment...



You've done nothing for this landowner if you didn't record it properly.

A valuable lesson.

Hog Traps



Supplemental Water

Some examples of recommended practices include:

- water collection and distribution systems, guzzlers
- trough modifications, well and windmill overflow management
- marsh or wetland restoration or development
- spring development and/or improvements



Supplemental Food

Ways to provide supplemental food include:

- food plots
- feeder and mineral supplements
- managing tame pasture, old fields and croplands, strip discing
- range enhancement, reseeding



Bushnell (M) Camera Name 91°F32°C ●

02-15-2012 23:38:19

Strip Discing

The “Disc”

- Opens bare ground and disturbs soil
 - Provides space for forbs (“weeds”) to grow
 - Food sources for all manner of wildlife and bugs, bugs, bugs





Supplemental Shelter

- installing nest boxes and bat boxes
- creating brush piles and slash retention
- managing fence lines
- managing hay meadow, pasture or cropland, strip mowing
- half-cutting trees and shrubs
- establishing woody plants and shrubs
- developing natural cavities and snags

Brush Pile Construction



Half Cutting Mesquite



Nest Boxes – Documenting the Activity



Census Counts/Surveys

- spotlight counting
- aerial counts
- daylight wildlife composition counts
- harvest data collection and record keeping
- browse utilization surveys
- census and monitoring of endangered, threatened or protected wildlife
- census and monitoring of non-game wildlife species
- Can be your observations or others, but needs to be useful
- Have a method or use someone who does so it will stick

Bird Surveys

- Very well-accepted activity from a compliance standpoint for any size property
- Done seasonally or annually to provide a good representation
- Data can be analyzed to establish trends and provide feedback on your management



Small Mammal Survey



Remote Camera Survey

Deer Surveys

- Start in August - timing
- Spotlight Surveys
- Remote Camera Surveys
- Aerial Surveys
- MLDP permit time
- Organized and useful



Summary

- **Record keeping is important – do it right to prevent further scrutiny**
- It does not have to be burdensome, but it does have to get done
- If DIY - Treat as if someone is paying you to do it. (Plateau model)
- **You will get asked at some point**
- **Good annual reports and plan updates when changes are made or every five years can prevent misunderstandings**
- Plateau can help, and does for hundreds of landowners across Texas – if you don't want to have anything to worry about this is a sure bet.



Thank You!

Plateau Land & Wildlife Management

*Working with **you** to protect and enhance
your land!*

Tim Milligan

512-894-3479

TMilligan@plateauwildlife.com